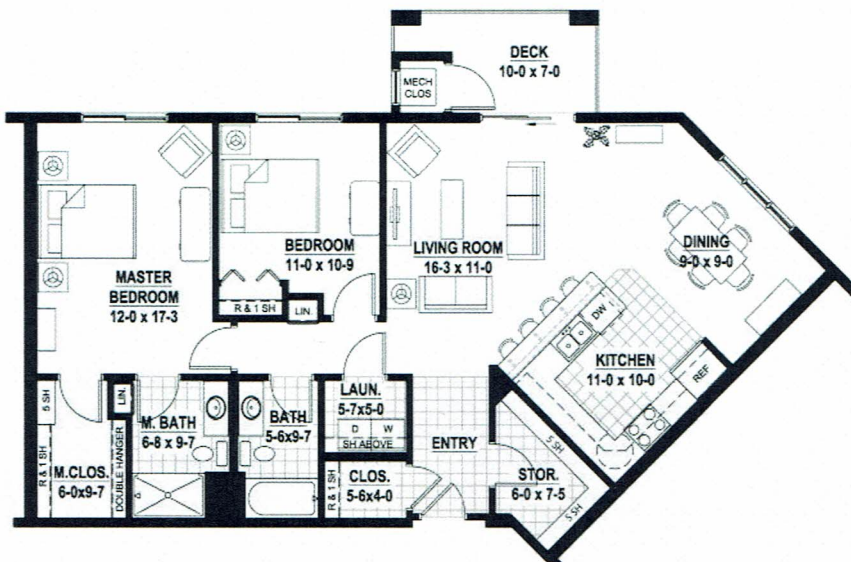




# Make Your Next Move Your Best Yet!



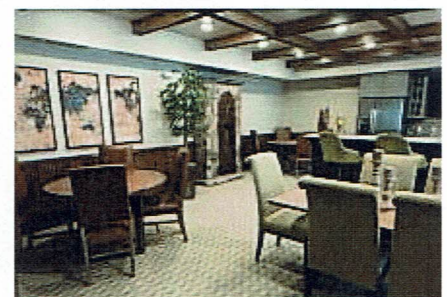
*This home at the Village Cooperative of Grand Junction features the Bradford floor plan. The community is for independent adults (62+) who want ownership at an excellent value without the hassles of maintenance and surprise repair bills. Transfer Value: \$190,674. Asking price: \$198,000. Monthly Carrying Charge: \$1,680.*



## The Bradford Floor Plan

This unique plan offers a spacious layout with an open concept that opens to a private balcony. This home also includes a reserved space in the heated underground parking garage as well as your own private laundry room with side by side front loading washer and dryer, plus lots of storage! You can't find a better maintenance-free value in this fantastic Grand Junction location, including all these amenities with annual equity appreciation and financial/tax benefits,

- Unique open layout with 2 bedrooms and 2 bathrooms.
- Spacious 1,354 sq. ft. of living space on one level.
- Energy Efficient windows
- Spacious kitchen with a peninsula that seats four.
- Lock & leave lifestyle with no maintenance or worries at a great value
- Community and club areas, guest suite, fitness center, an outdoor patio with two gas grills, raised gardening plots and a well appointed workshop



**Call us today for more details at (970) 628-3628 before it's gone !**  
To learn more about senior housing cooperatives go to [VillageCooperative.com](http://VillageCooperative.com)



621 26 1/2 Road | Grand Junction, CO 81506

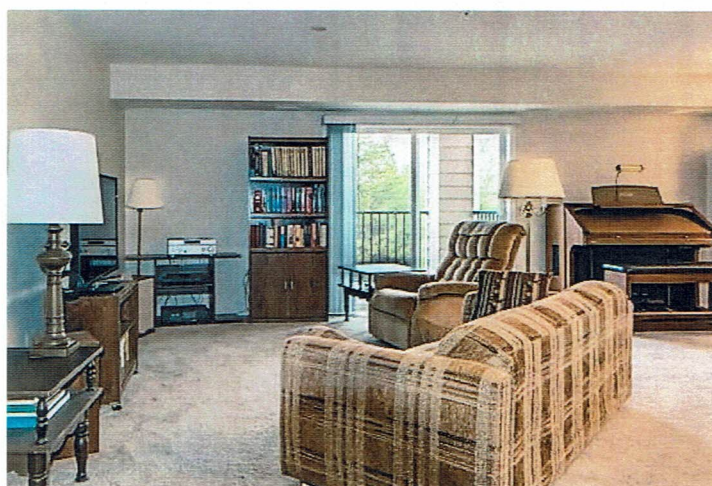


Visit us at [facebook.com/VillageCooperativeofGrandJunction](https://www.facebook.com/VillageCooperativeofGrandJunction)



## Features and Upgrades

- Side by Side 25 CF Refrigerator with Water/Ice Dispenser
- Range with Convection Oven
- Dishwasher w/Front Controls
- Side-by-Side Full-size Front Loading Washer and Dryer with pedestals
- LED Down Lights in lieu of Standard Pendants Over the Kitchen Peninsula Area
- Dover Oak 42" Kitchen Flat Panel Cabinets
- Spacious Closets Complete with Shelving
- 36" Tall Vanity in Primary Bath
- Luxury Vinyl Plank in the Dining Area
- No-Wax Vinyl Flooring in Kitchen, Bathrooms, Laundry, Storage Rooms and Entry
- Carpet in Living Areas and Bedrooms with Upgraded Carpet in the Second Bedroom/Office
- Bradford Floor Plan Includes a Laundry Room, Storage Room and Entry Closet.
- Walk-in Shower Stall in Primary Bath with Grab Bars
- Second Bath Has Tub/Shower Combination
- Lever Handle Locksets
- Private Maintenance-free Balcony
- Spectrum High Speed Internet and Premium Cable TV at Bulk Rates– Currently \$43/Month



621 26 1/2 Road | Grand Junction, CO 81506

